

STORY BY Dewald Haynes

# Luxury Developments around Asia

*Luxury is not only a variable, it is also a matter of personal taste, geography, culture, education, social standing and a product of evolution. Perhaps to better understand the concept, a better grasp of the here and now is required. Right now in 'Asia' (the here) it is the 'Year of the Horse' (the now). Indulge me as I provide you with a parody of the Horse regarding luxury: For a few luxury is having a pony, for others it is betting on a racing horse, some people might feel more comfortable on a wooden rocking horse while the most royal among us would be most pleased by riding in a horse carriage. The only constant within this parody is that the one thing luxury could never be - is a mule!*

Looking at architectural design within Asia perhaps identifying what it is NOT luxury might be more apparent, but the splendid news is that there are many luxurious developments that not only showcase luxury architecture but also defines the HERE and the NOW in timeless symmetry. The latest upcoming high-end projects, envisioned by WATG and Wimberly Interiors, around Asia presents a luxury concept that provides not as much 'a shelter from the elements' as an 'embrace of the environment'. Saddle up and discover how the designers behind these projects define the concept and interpret the geography and age of luxury around Asia.



INNER MONGOLIA

## Banyan Tree Batu Bay

ARCHITECTURE BY Christopher Singer

Inspired by the powerful desert landscape the buildings are designed in a contemporary style as adapted from traditional desert fort structures, with their massive adobe walls, punctured openings and deep shadows. The climatic appeal of the Batu Wan, with its seasonal rhythms, allowed for the creation of unique features, such as the outdoor fire pits surrounded by built-in seating, roof top lounges for spectacular sunset views and open bathing experiences with views of succulents gardens. These unique features, the various entertainment areas and the water sports activity center all make this a luxury desert destination.

*"Luxury is buying into something of permanence and enduring character. The most important element to me is imagination and also to have a very real awareness of the importance of Interior and Landscape design - both go a long way to deliver a completely integrated luxury experience. Designing luxury properties requires a tremendous amount of effort and attention to detail. To me the greatest luxury is simply a 'sense of place'." - Christopher Singer*



LANGKAWI, MALAYSIA

## Rainforest Villas

ARCHITECTURE BY Prasasti Chenchin

The design approach aims to preserve and enhance the natural beauty and delicateness of the Langkawi rain forest. The site and its unique topography, ocean views, indigenous flora and fauna are the greatest design inspiration. The architecture becomes a vessel, in which to encourage guests to retreat and be immersed in nature. The spaces are simple, poetic, elegant, exquisitely detailed, restrained, grounded and elevated. A gallery within the rain forest and of the rain forest.



*"Luxury lies in the attention to details. From the careful choreography of a personal experience, to the interplay of architectural-interior materials and joinery, and service that is impeccable and personalized." - Prasasti Chenchin*

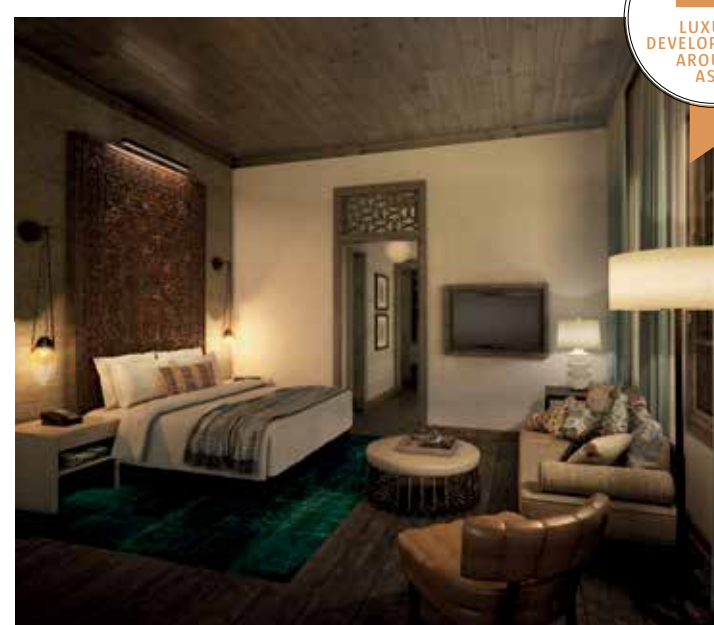


BOGOR, INDONESIA

# Pullman Vimala Hills

ARCHITECTURE BY **Harris Christiaansen**

The hotel is designed to cater for a diverse range of guests and visitors. During the week, government agencies, organizations and private companies will utilize the meeting, and conference facilities, on the weekends this will also include weddings and banquets. It is an ideal location for weekend “get-a-ways” from the busy life in Jakarta and the diverse range of amenities have been designed to attract families and make it an ideal location for family breaks, holidays or the longer school vacations. The long gently sloping site is bounded by a steep drop to a small valley filled with rice paddies. Inspired by traditional Javanese houses, the architectural character, is a contemporary interpretation of time-honored forms that convey the essence of a tropical Indonesian retreat.



*“The idea of luxury is evolving in response to the new generation of travelers. Luxury is becoming more about encountering a truly unique experience in a personalized way. Bigger isn’t better - it’s about smaller boutique experiences no matter how large the property. The next generation of Luxury travelers want to be at one with “the place” and leave with memories that will enrich the rest of their lives. With the Pullman Vimala Hills, we endeavored to create this experience by looking to the local culture and the site’s unique characteristics, which we combined to achieve a unique and authentic experience that could only come to life at this special place or destination “ - Harris Christiaansen*



INDONESIA

# Ritz-Carlton Bali

ARCHITECTURE BY **Roger Gaspar**

The challenge was to integrate two levels of the site separated by a 50-meter cliff, and developing an architectural solution that is contemporary yet echoes Balinese culture and traditions. The design team took advantage of the lush cliff by using it as a key landscape feature to the resort experience. Without disturbing the environmental beauty of the cliff, the iconic elevator tower remains the only visible element connecting the upper cliff to the lower cliff area. The architecture takes inspirations from Balinese concepts of space and roof forms, and is tastefully infused with contemporary interpretations of traditional architectural elements such as timber and stone details, decorative screens and carvings.

*“How ‘luxury’ is defined seems to be always in flux, driven by people’s ever-changing and ever-increasing expectations. To me, luxury is when utmost care, the best comfort and personalized service, above and beyond the norm, goes hand-in-hand with the experience of the place, whether it be the architecture, the interior design or the outdoor spaces. People seek for authenticity, something that captures the spirit of the place and manifests in the way it tingles and excites the senses. It is these delightful, unexpected, joyful, unique experiences - perhaps sometimes quirky - that always leave the most and long-lasting impressions to guests that, more than anything, can never be measured in tangible terms.” - Roger Gaspar*

TURKEY

# Viceroy Istanbul

INTERIOR DESIGN BY **Liana Hawes Young**

The Viceroy Estate at Bebekoy has a series of buildings nestled in the verdant hills overlooking the Bosphorus. The land is lush and has an Agrarian past, to celebrate this history the interiors feel current and luxurious and appropriate to the Viceroy brand with its long standing commitment to great design. Many indigenous wood species and stones, patterns, motifs and styles reflect the rich history of Turkish design. Locally sourced hand-painted accent tiles are used in the bath and powder rooms. The use of Patina’s metals in lighting and trays and furniture was extensive. The rooms have a color scheme based on an overall neutral palette but punctuated boldly with the colors of the Bosphorus. The blues and greens in the water are so complex and ever changing and Ombre drapery fabric was specifically chosen to resemble the changing hues within the water.



*“Luxury for me is creating a completely bespoke experience for the guest that captures their every hope, desire and expectation for the property they are choosing to visit. The design should capture the essence of the place. I believe that luxury is layering experiences for the guest and captivating all of their senses. The luxury traveler is sophisticated and demanding and does not seek the mundane. Through the use of exquisite architecture and materials, we create spaces that speak to the mind, body and soul.” - Liana Hawes Young*